

QUARTERLY NEWSLETTER

Thanks!

Winner Listing:

CRMU appreciates your business! As a token of our appreciation, each quarter we will have small drawings for our customers. Please check the newsletter to see if you are a winner and THANK YOU for your business!

WINNER OF FREE CRMU TRAVEL MUG

Lee Boeke

WINNER OF FREE CRMU WATER BOTTLE

Michael Stout

WINNER OF FREE CRMU BLANKET

Thelma Thompson



Should I Insulate My Home?

Checking your home's insulation is one of the fastest and most cost-effective ways to use a whole-house approach to reduce energy waste and make the most of your energy dollars. A good insulating system includes a combination of products and construction techniques that protect a home from outside hot or cold temperatures, protect it against air leaks, and control moisture. You can increase the comfort of your home while reducing your heating and cooling needs by investing in proper insulation and sealing air leaks.

New Website: www.crmu.net

If you need information about CRMU, you can find it at our new website! If you don't find what your looking for or have suggestions of what you would like added to our site, email us at: info@crmum.net

COON RAPIDS MUNICIPAL UTILITIES

Plans Cancelled for Proposed Coal-Fired Power Plant in Marshalltown, IA



Marshalltown, Iowa — March 5, 2009 — Interstate Power and Light Company, a subsidiary of Alliant Energy Corporation, cancelled plans to construct the proposed Sutherland Generating Station Unit 4 in Marshalltown, Iowa. The project's other partners are Central Iowa Power Cooperative (CIPCO), Corn Belt Power Cooperative (Corn Belt) and North Iowa Municipal Electric Cooperative Association

(NIMECA).

The decision to cancel the project was based on a combination of factors including the current economic and financial climate; increasing environmental, legislative and regulatory uncertainty regarding regulation of future greenhouse gas emissions and the terms placed on the proposed power plant by regulators.

While CRMU did not participate in this project directly, as a member of NIMECA, CRMU would have shared in

the low-cost economical capacity and energy produced from this plant subscribed by other members of NIMECA and Corn Belt.

"Our members are disappointed that the project will not be moving forward," said Greg Fritz, NIMECA CEO. "When combined with our existing hydro, wind, and coal resources this hybrid plant would have provided the energy necessary for continued economic development and growth in our member communities."



Electric Distribution System Study Underway...

CRMU has contracted the engineering services of DeWild Grant Reckert & Associates Company, Inc. "DGR" to build a detailed computer model of CRMU's primary electric system. The model will be used for voltage and thermal analysis of the system. This model will also be available in the future for use in day-to-day uses such as calculation of fault currents, as well as future studies such as device coordination and arc-flash studies.

Based upon the above analysis, a prioritized 10-year capital improvement plan will be developed.

CRMU to Begin Televising of Sanitary Sewer Lines



This summer, CRMU will begin the process of videotaping the wastewater collection system as part of its "Plan of Action" program submitted to the IDNR for mitigating inflow and infiltration.

Although it will be labor intensive, while CRMU is videotaping the mains, we will also be verifying every "wye" or connection to the wastewater system and recording this data into our GIS mapping and record-keeping system. This

information will be invaluable as future collection system improvement recommendations are formulated.

Unfortunately, this means that CRMU will need to gain access to each residence and business to insert a camera into each service line connected to the wastewater system. Upon request, CRMU will provide customers a digital copy of the video of any resident's service line.

During this time, CRMU

will also inspect buildings for inappropriate connections to things such as: sump pumps, perimeter drains and down spouts.

In advance, CRMU would like to sincerely thank all residents and businesses for their cooperation in our maintenance efforts. We understand that this will be an inconvenience to our customers, but there is really no other cost-effective way to get the data.



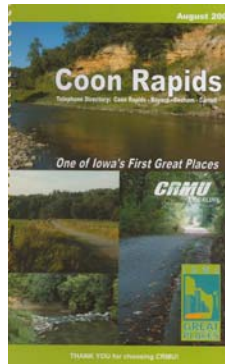
The costs for these capital improvements and maintenance activities will be funded from reserves. No wastewater rate increase is anticipated at this time.

Sanitary Sewer Lift Station Project to be Bid this Spring

The scope of the project includes the expansion of the existing lift station including: the construction of a new wet well and pump, construction of a new force main to parallel the existing force main from the lift station to the lagoons, and the installation of a standby generator for the lift station facility.

This project will increase the pumping capacity of CRMU's plant to 600 gallons per minute (gpm). The new 8-inch force main will also provide operational redundancy to quickly mitigate any potential hazards should there be a pipe failure under the Middle Racoon River.

These improvements will also help CRMU meet compliance regulations as outlined in CRMU's NPDES operating permit issued by the Iowa Department of Natural Resources.



Phone Book Updates

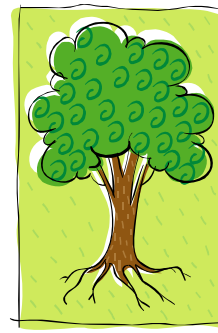
- Contact CRMU with changes

CRMU is in the process of reviewing and updating information for this year's directory which will be distributed this fall. If any customer would like to modify their listing (i.e. change name, change address, bold, italic, etc.) or advertising information, please call our office at 999-2225, or email us your changes at: info@crmu.net

We are also in the process of designing a new cover for the phone book. If anyone would like to submit pictures for possible inclusion on the directory cover, please email them to: info@crmu.net.

Also, if there is any additional information or content material that customers would like to see included in the directory, please let us know.

FREE TREES



- 50 Autumn Blaze Maples
- 15 Deborah Maples
- 35 Prairifire Crab

CRMU is committed to being environmentally responsible and to enhancing the quality of life within Coon Rapids through energy conservation.

CRMU will provide trees at no cost to any CRMU residential electric or gas customer. Tree delivery is scheduled for April.



Know what's below. Call before you dig.

To place your tree order, simply call the CRMU Office at 999-2225.