

QUARTERLY NEWSLETTER

Thanks!

Winner Listing:

CRMU appreciates your business! As a token of our appreciation, each quarter we will have small drawings for our customers. Please check the newsletter to see if you are a winner and THANK YOU for your business!

WINNER OF FREE CRMU TOTE BAG

Joan Irlmeier

WINNER OF FREE CRMU BEACH TOWEL

Eddie Kautzky

WINNER OF FREE CRMU BLANKET

Todd Heck



Energy Saving Tips

Keep Your Energy Bill Out of Hot Water.

Water heating can be expensive, but there are a number of ways to lower your costs. One way is to use less water. Repair leaky faucets immediately and use low-flow shower heads. Insulate your hot-water storage tank and pipes, and drain a quart of water from your tank every three months to remove sediment which impedes heat transfer and lowers efficiency.

Board of Trustees Approves Engineering Services Agreement for Wastewater Lift Station and Force Main Improvements - Collection System Evaluation to Also Start this Summer



The Board of Trustees approved an engineering services agreement with Veenstra & Kimm, Inc. at their January meeting.

Veenstra & Kimm, Inc. (located in West Des Moines) is a consulting engineering firm specializing in civil and environmental projects.

The scope of the project includes the expansion of the existing lift station including: the construction of a new wet well and pump, construction of a new force main to parallel the existing force main from the lift station to the lagoons, and the installation of a standby generator for the lift station facility.

This project will increase the pumping capacity of the plant to 600 gallons per minute (gpm). The new 8-inch force main will also provide operational redundancy to quickly mitigate any potential hazards should there be a pipe failure under the Middle Raccoon River. These improvements will also help CRMU meet compliance regulations as outlined in CRMU's NPDES operating permit issued by the Iowa Department of Natural Resources.

As a part of this project, the IDNR will require emergency pumping capabilities in

the form of a standby generator. The standby generator will be a permanent/portable design connected to an automatic transfer switch with a power cord and plug, such that CRMU could move the generator to power CRMU's drinking water wells if necessary.

Preliminary cost projections for the proposed improvements have been estimated at approximately \$325,000. The project design is scheduled to be substantially complete by May 1, 2008. A bidding and construction schedule will be established upon completion of the design.

This summer, CRMU will also be busy cleaning and videotaping the wastewater collection system as part of its "Plan of Action" program submitted to the IDNR for mitigating inflow and infiltration.

CRMU is currently evaluating equipment from different vendors which will be purchased to perform the maintenance.

Although it will be labor intensive, while CRMU is videotaping the mains, we will also

be verifying every "wye" or connection to the wastewater system and recording this data into our GIS mapping and record-keeping system. This information will be invaluable as future collection system improvement recommendations are formulated.

Unfortunately, this means that CRMU will probably

need to gain access to each residence and business to inject dye or a camera into the wastewater system. During this

time, CRMU will also inspect buildings for inappropriate connections to things such as: sump pumps, perimeter drains and down spouts. CRMU would like to thank all residents and businesses in advance for their cooperation

in our maintenance efforts. We understand that this will be an inconvenience to our customers, but there is really no other cost-effective way to get the data.

The costs for these capital improvements and maintenance activities will be funded from reserves. No wastewater rate increase is anticipated.



NEW HIGH DEFINITION CHANNELS



Channel 79

Fox Sports Net Midwest—this channel only broadcasts when HD programming is available.

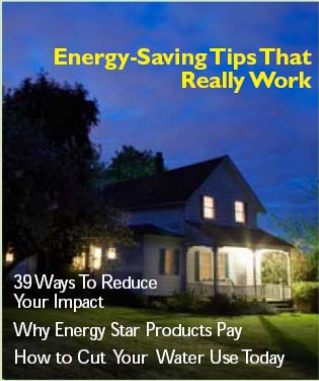


Channel 82

Nat Geo HD — 24/7 simulcast of analog channel.

eco@home

You and Your Municipal Utility
Going Green Together



COMING SOON...

As part of our ongoing energy efficiency efforts, CRMU will start to distribute Eco@Home. Eco@Home is your free guide to living "green." A new issue of Eco@Home will be available every other month.



PROJECT SHARE

"Add a PS To Help A Neighbor"

Project Share is a plan, created by your municipal utility, to assist needy households in paying their wintertime energy bills.

You can help by adding a regular **PS** contribution to your monthly utility payment, or by making a direct donation to **Project Share**. These funds will then be distributed to neighbors in need for wintertime energy costs.

Those qualifying for help will be carefully identified by an area social service agency. A local committee will oversee **Project Share** to guarantee all contributions will be handled equitably and efficiently.

So please, add a **PS - Project Share** - to your utility payment each month. It's a simple way to share some warmth with those who need it.

Project Share — "PS"

I'd like to help a neighbor in need with a tax-deductible contribution to Project Share

Name

Address

City / State

Phone

I will contribute \$ _____ per month to Project Share.

I understand this amount will be billed to me monthly.

I have enclosed \$ _____ donation to Project Share.

Please cut this section out and mail it to:

Coon Rapids Municipal Utilities

P.O. Box 207

Coon Rapids, IA 50058

New Employee

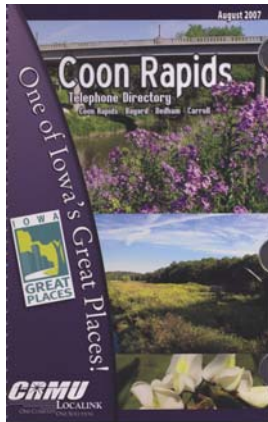


CRMU's newest employee is Dell Petty. Dell accepted the position of Communications Technician and started working for CRMU on January 28, 2008.

For the past 26 years, Dell worked in the maintenance department for Syngenta in Coon Rapids.



Know what's below.
Call before you dig.



Phone Book Updates

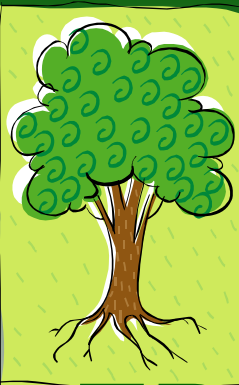
- Contact CRMU with changes

CRMU is in the process of reviewing and updating information

for this year's directory which will be distributed this fall. If any customer would like to modify their listing (i.e. change name, change address, bold, italic, etc.) or advertising information, please call our office at 999-2225.

We are also in the process of designing a new cover for the phone book. If anyone would like to submit pictures for possible inclusion on the directory cover, please email them to: crmu@crmu.net.

Also, if there is any additional information or content material that customers would like to see included in the directory, please let us know.



- 100 Autumn Blaze Maples

FREE TREES

CRMU is committed to being environmentally responsible and to enhancing the quality of life within Coon Rapids through energy conservation.

CRMU will provide trees at no cost to any CRMU residential electric or gas customer. Tree delivery is scheduled for April.

To place your tree order, simply call the CRMU Office at 999-2225.